

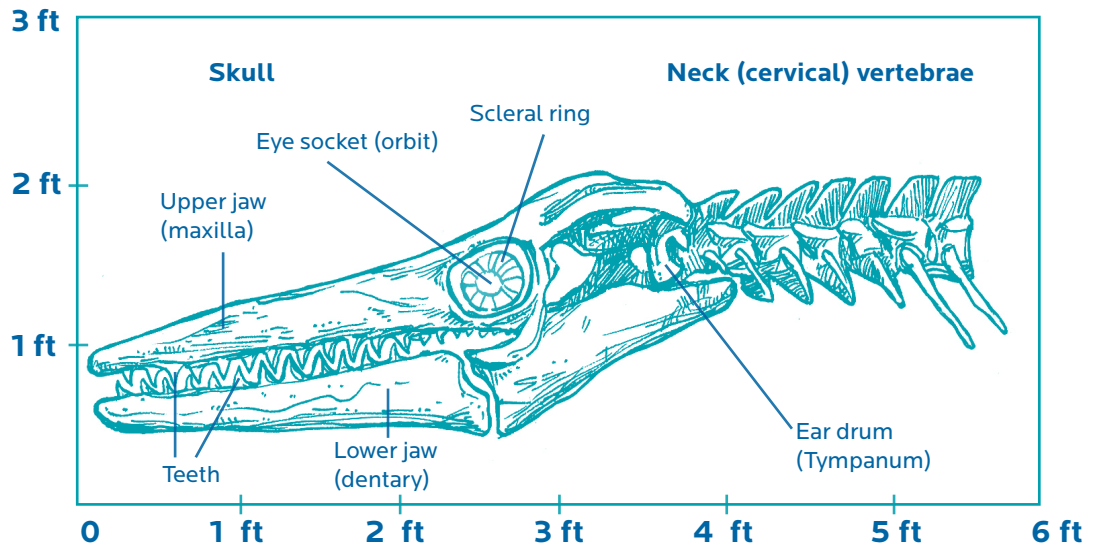
CREATE A SITE MAP: PART 1

Review the words in the Word Bank, the sketch, and the notes below.

Use this information to complete a site map on “Create a Site Map: Part 2.”

Word Bank

cartilage
conical
intact
late Cretaceous
mosasaur
Tylosaurus proriger
vertebrae



This sketch and notes are based on a large fossil found in 1996, in Gove County, Kansas. Based on the location of the find in the sedimentary layers, scientist Mike Everhart estimates the fossil is 85 million years old, dating to the time of the **late Cretaceous**.

Found a four-foot skull and seven vertebrae (one foot, eight inches) of a very large (30 foot) mosasaur in Horsethief Canyon in the Smoky Hill Chalk, Gove County, Kansas. Identified the specimen as a Tylosaurus proriger. Length of skull is a key identifying factor since no other mosasaur of this time was as large.

The left eye socket is intact. This is the first time this feature has been observed in a Tylosaurus.

There seems to be some cartilage where the ear drum would have been.

Although one tooth is missing in the upper jaw, all other teeth are present in the upper and lower jaw. There are 15 teeth in each upper jaw and 13 in each lower jaw. The teeth are conical in shape. The largest are about two inches high with a base that is about 1.5 inches across.

Student Name: _____

Student Handout

CREATE A SITE MAP: PART 2

Create a site map based on the information in Part 1.

- 1. Make a grid over the illustration and label.** Use a ruler to draw a 6 X 3 grid over the illustration in Part 1.
- 2. Label the site map.** In the grid below, label the y-axis (0 to 3 ft) and the x-axis (0 to 6 ft).
- 3. Label scale.** Label the scale on your site map. Hint: If six squares across equals six feet, how much does one square equal?
- 4. Copy the illustration.** Use the grid lines to copy the illustration in Part 1 to the grid below.
- 5. Add notes and observations.** Use the notes in Part 1 to complete the site map.

Scale: 1 Square = _____

Specimen: _____

Collected by: _____

Date of find: _____

Age: _____

Location: _____

Observations: _____
